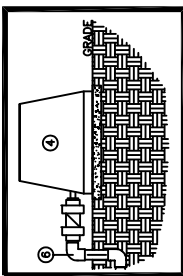


| REVISIONS | DESCRIPTION | DATE |
|-----------|-------------|------|
| | | |
| | | |

| CRITICAL DIMENSIONS | |
|---------------------|---------|
| A | 69.00" |
| B | 57.00" |
| C | 52.00" |
| D | 3.00" |
| E | 74.50" |
| F | 106.00" |
| G | 65.50" |
| H | 97.00" |

TROY AIR BLOWER



THE H-SERIES HOOT AEROBIC TREATMENT SYSTEM

- 1) PRETREATMENT TANK - WHERE ANAEROBIC DIGESTION OCCURS AND STORAGE FOR NON-BIODEGRADABLE MATERIALS.
- 2) AERATION CHAMBER - WHERE AIR IS INTRODUCED INTO SEWAGE FOR DIGESTION.
- 3) CLARIFIER - A STILL CHAMBER WHERE SOLIDS SETTLE OUT AND THE CLEAR EFFLUENT RISES.
- 4) TROY AIR LINEAR AIR BLOWERS - LONG LIFE, EFFICIENT UNDER PRESSURE DELIVERS IT TO THE TANK. MUST BE REMOTELY MOUNTED UP TO 50' FROM SYSTEM. MAINTAIN 1/8" SLOPE TOWARDS TANK FOR DRAINAGE.
- 5) AIR MANIFOLD - DELIVERS THE AIR FROM THE LINE TO THE STONES FOR DIFFUSION INTO THE SEWAGE.
- 6) AERATION LINE - DELIVERS THE AIR FROM THE PUMP TO THE MANIFOLD. CHECK VALVE INCLUDED.
- 7) AERATION STONE - AIR IS FINELY DIFFUSED FROM THE STONE INTO THE AERATION CHAMBER.
- 8) 15" COVERS - PROVIDE ASSEMBLY PORT ACCESS INSIDE OF THE SYSTEM. (NOT REQUIRED FOR REGULAR SERVICE)



HOOT SYSTEMS, LLC
www.hootsystems.com

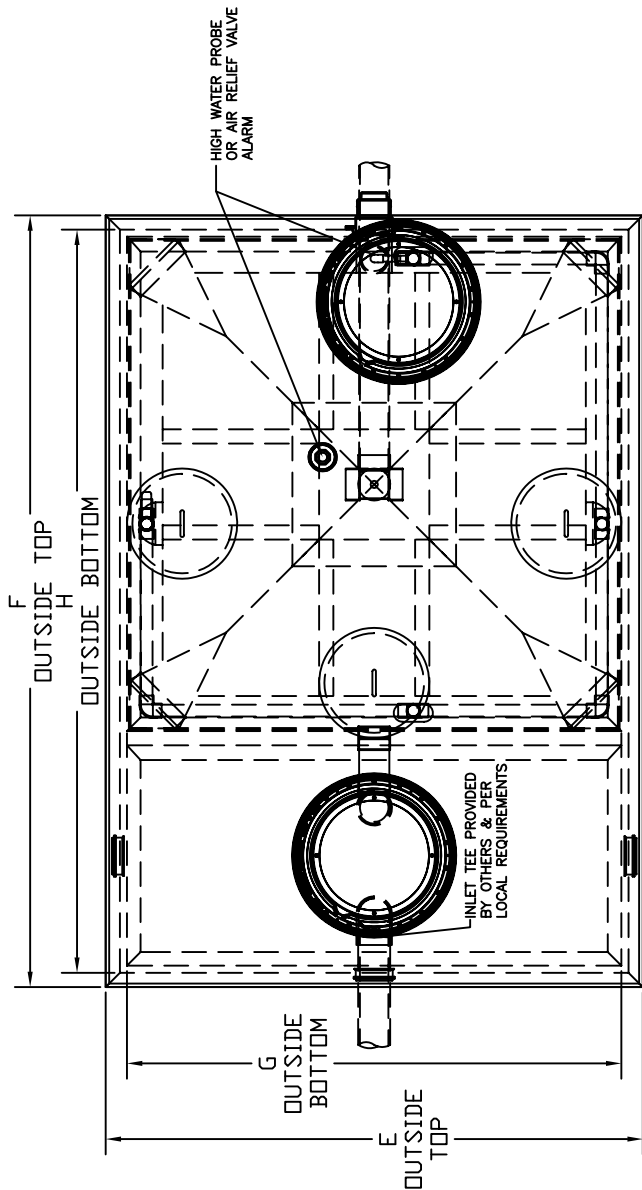
THIS DRAWING IS THE PROPRIETARY PROPERTY OF HOOT SYSTEMS LLC. REPRODUCTION, DISCLOSURE OR USE OF ANY PART OF THIS DRAWING OR ANY INFORMATION THEREIN IS EXPRESSLY PROHIBITED WITHOUT PRIOR WRITTEN CONSENT OF HOOT SYSTEMS LLC.

PART #

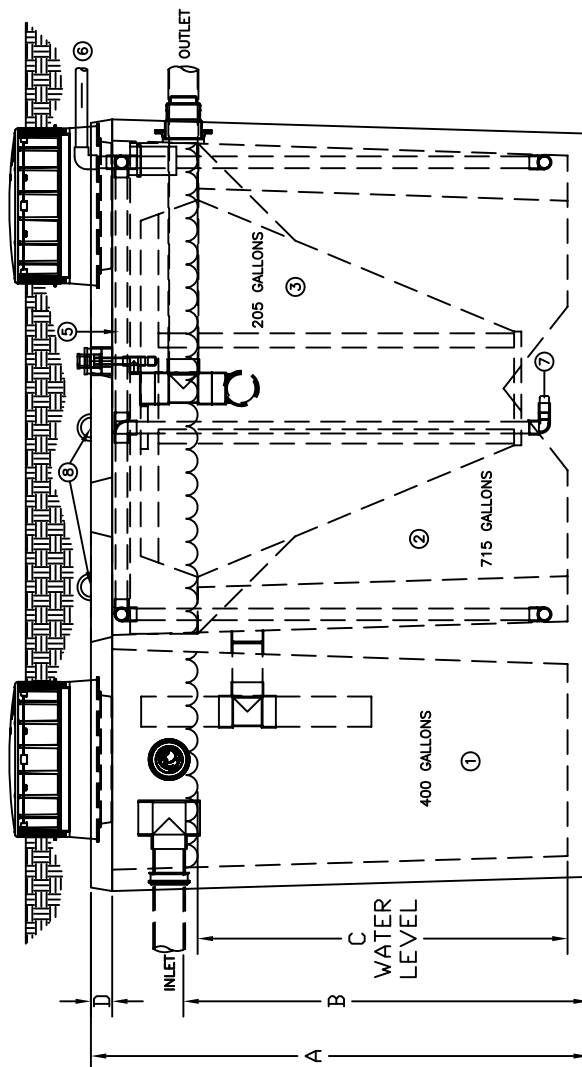
DESCRIPTION: 600 GPD GRAVITY DISCHARGE SYSTEM
H-500 A (2- RISER POLYLOK ACCESS)

H-600A (2R)

DATE: 9-7-09
DRAWN BY: AY
CHECK BY: RS
SCALE: N.T.S.



PLAN VIEW



SIDE ELEVATION