

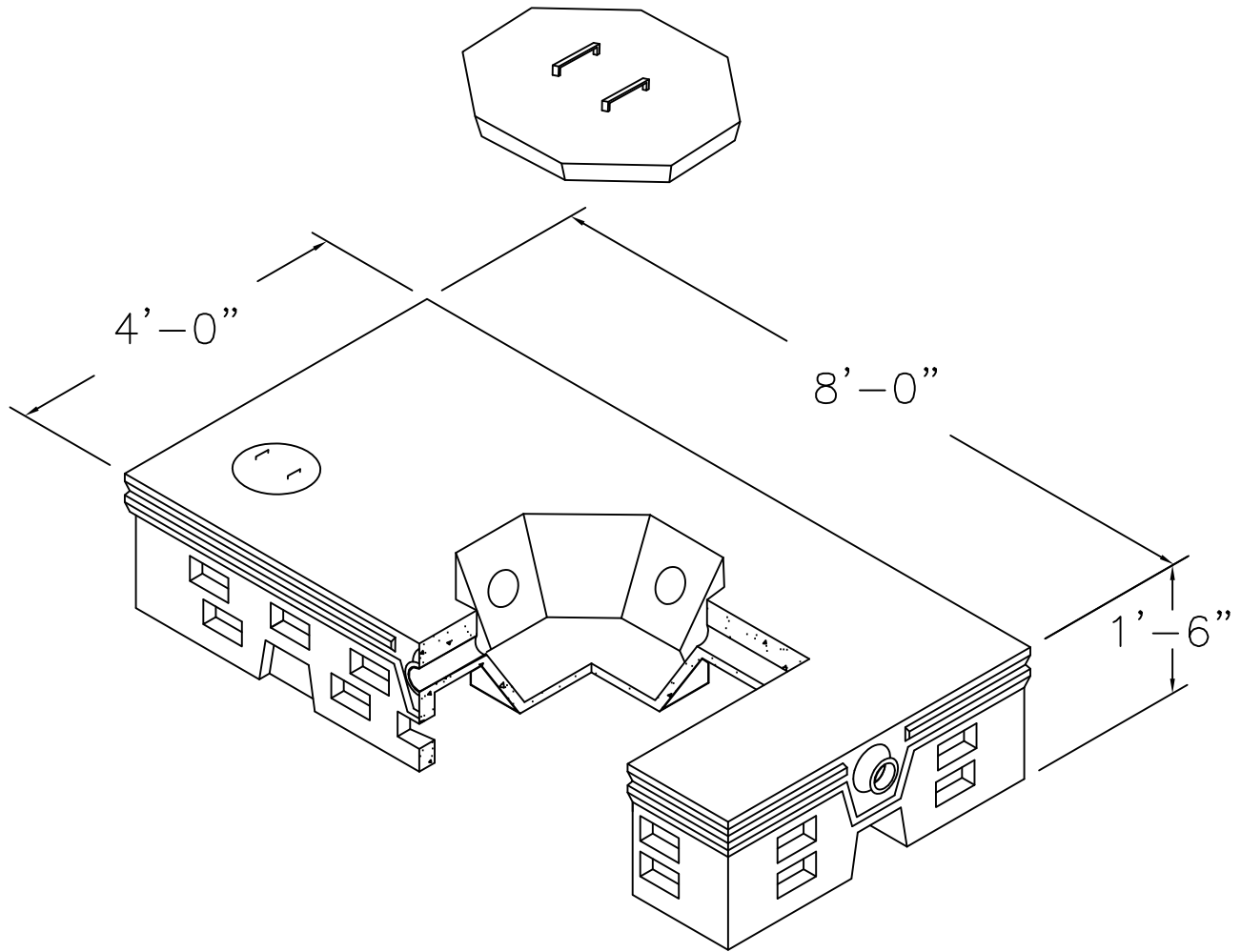


# WIGGIN MEANS PRECAST CO., INC.

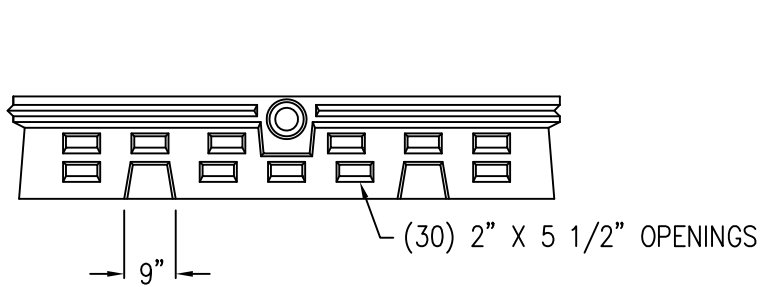
P.O. BOX 1507 POCASSET, MASSACHUSETTS 02559

TEL: 508.564.6776 FAX: 508.564.6770

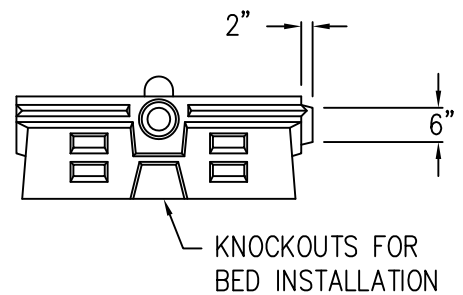
[www.wigginprecast.com](http://www.wigginprecast.com)



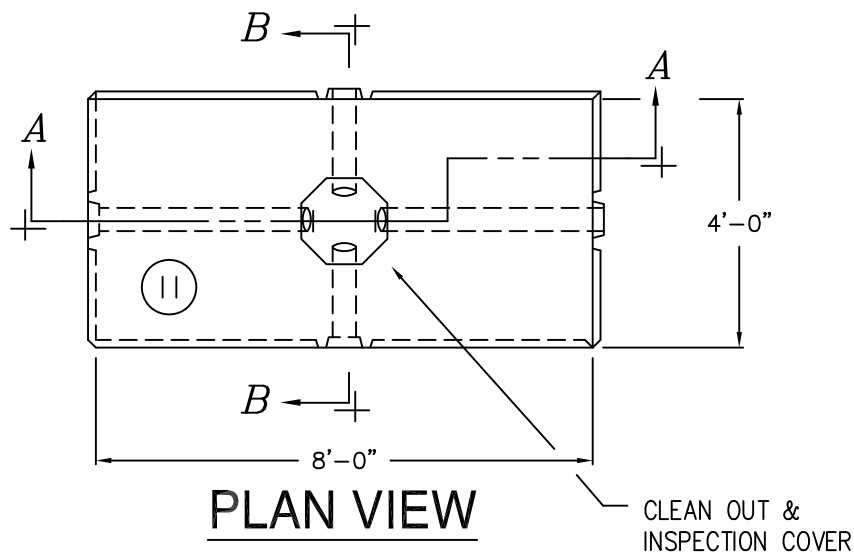
## LEACHING CHAMBER 4 x 8 " D" FLOWDIFFUSOR



**FRONT VIEW**

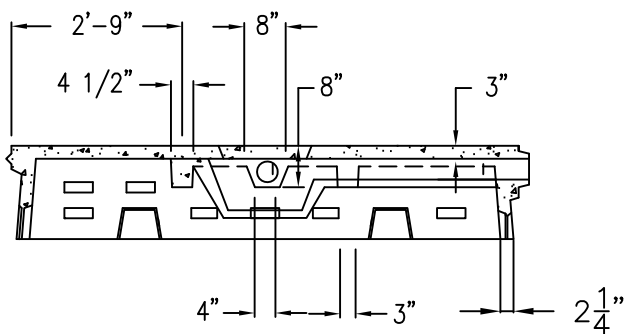


**SIDE VIEW**

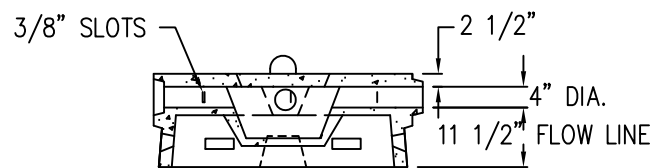


**PLAN VIEW**

CLEAN OUT & INSPECTION COVER



**SECTION A-A**



**SECTION B-B**

**SPECIFICATIONS**

- 1.) CONCRETE STRENGTH F'C 5,000 PSI @ 28 DAYS. DENSITY 150 PCF.
- 2.) CEMENT, PORTLAND TYPE I OR III. ASTM C150-81.
- 3.) ADMIXTURES, AIR & PLASTICIZERS @ ASTM C233-82.
- 4.) REINFORCING ASTM A615 FOR WIRE FABRIC, GRADE 60 BAR.
- 5.) DESIGN LOADING AASHTO HS20-44.
- 6.) WEIGHT 2,027 LBS