

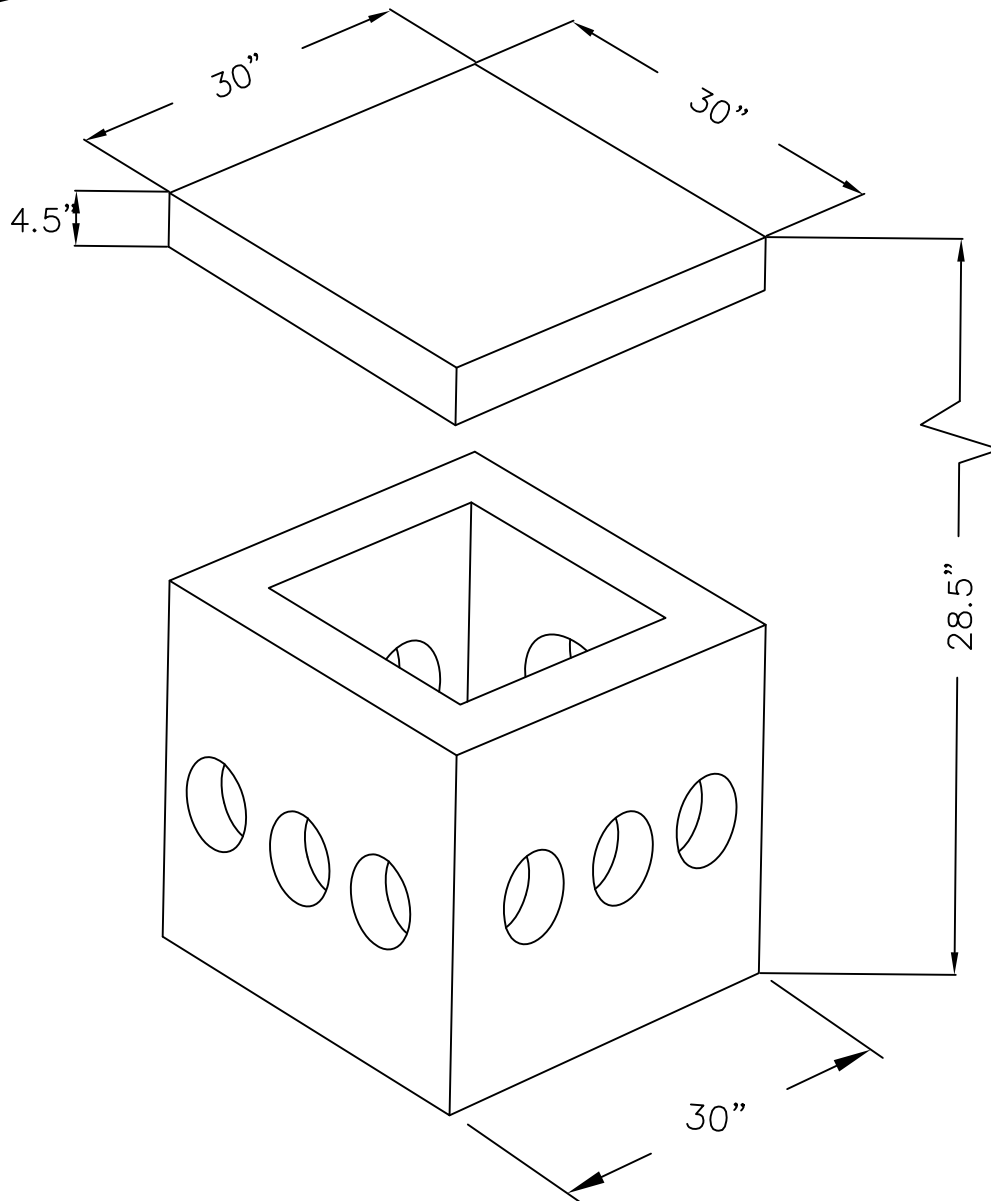


# WIGGIN MEANS PRECAST CO., INC.

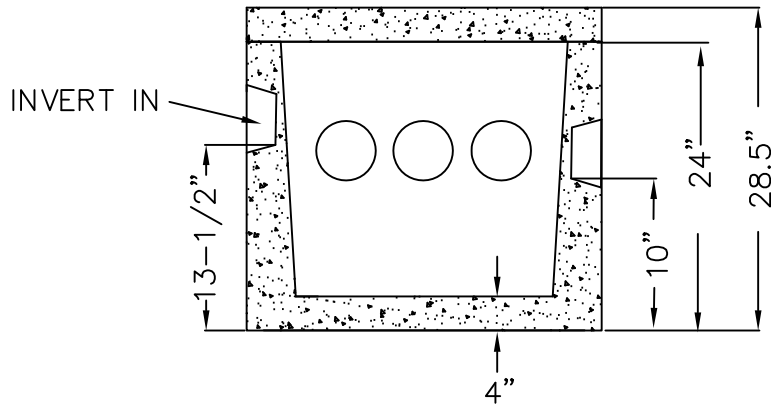
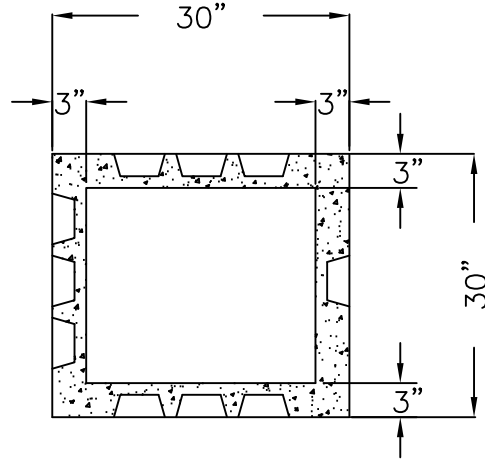
P.O. BOX 1507 POCASSET, MASSACHUSETTS 02559

TEL: 508.564.6776 FAX: 508.564.6770

[www.wigginprecast.com](http://www.wigginprecast.com)



**DB-9**  
**DISTRIBUTION BOX: 9 OUTLET**  
**H-20**



## SPECIFICATIONS

- 1.) CONCRETE STRENGTH 5,000 PSI @ 28 DAYS.
- 2.) CEMENT, PORTLAND TYPE II PER ASTM C150-81
- 3.) STEEL REINFORCEMENT PER ASTM A-615. GRADE 60.
- 4.) DESIGN LOADING PER AASHTO HS-20.
- 5.) OPTIONAL CIRCULAR SERVICE COVER
- 6.) 8" & 15" RISER SECTIONS AVAILABLE
- 7.) WEIGHT 842 LBS