

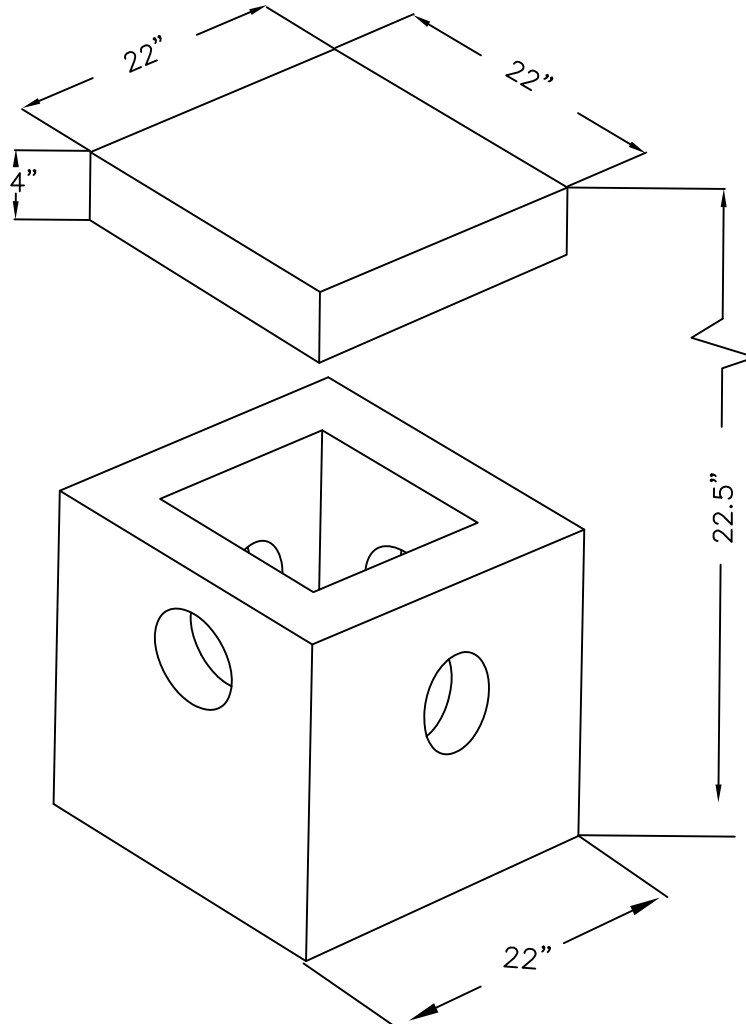


# WIGGIN MEANS PRECAST CO., INC.

P.O. BOX 1507 POCASSET, MASSACHUSETTS 02559

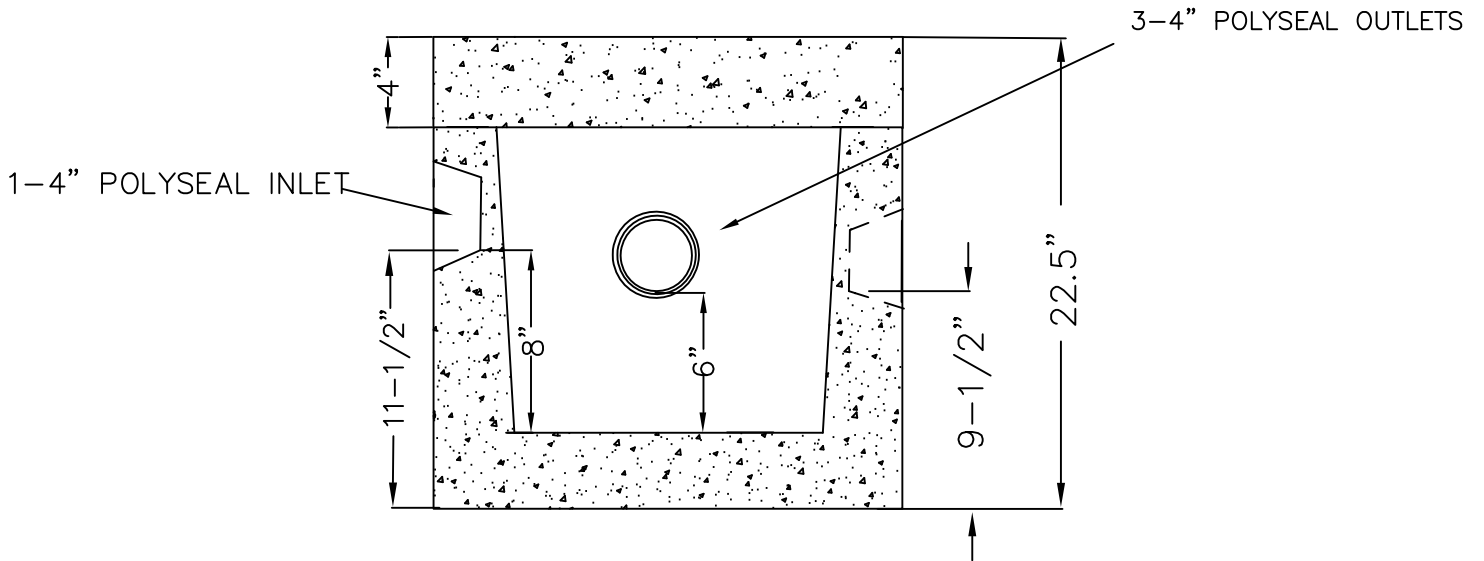
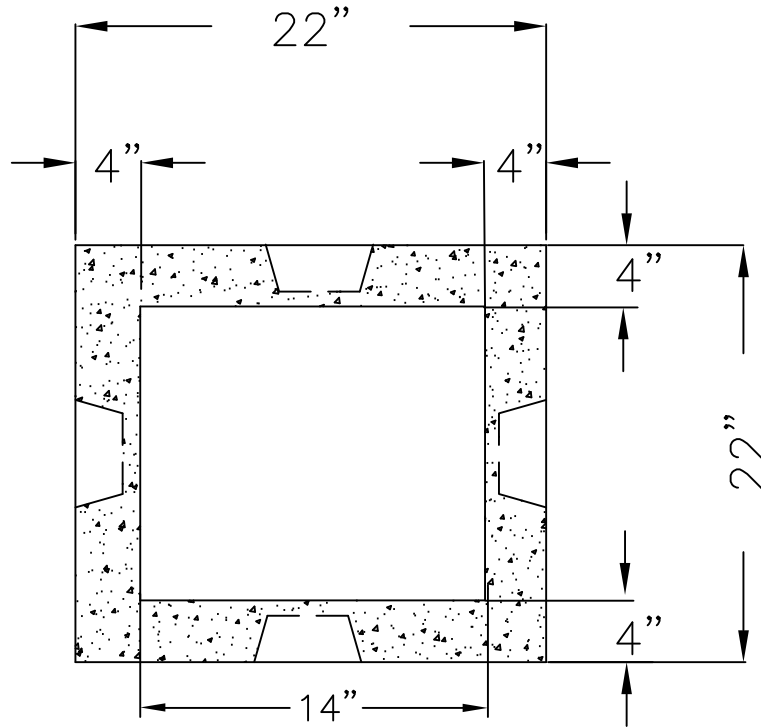
TEL: 508.564.6776 FAX: 508.564.6770

[www.wigginprecast.com](http://www.wigginprecast.com)



**DB-3 H-20**  
**DISTRIBUTION BOX: 3 OUTLET H-20**

# PLAN VIEW



# CROSS SECTION

## SPECIFICATIONS

- 1.) CONCRETE STRENGTH 5,000 PSI @ 28 DAYS.
- 2.) CEMENT, PORTLAND TYPE II PER ASTM C150-81
- 3.) REINFORCEMENT PER ASTM C1227-93
- 4.) 8" & 15" RISER SECTIONS AVAILABLE
- 5.) WEIGHT 530 LBS